



UWI
OPEN CAMPUS



Micro-Credentialing and the Future of Online Higher Education: A UWI Open Campus Perspective

Dr. Luz Longsworth
Principal UWI Open Campus and Pro Vice-Chancellor (Global Affairs), in collaboration with Dr. Sarah Owen , Director CPEC, UWI Open Campus

November 5, 2020

Overview of Presentation

1. A definition of Micro-Credentials
2. An example of Micro-Credentials at work in HEI's
3. The History of Competency Based learning at UWI Open Campus
4. Micro-Credentials and the Brave New World of Higher Education in the time of COVID 19.
5. Recommendations



Micro-Credentials – A ‘brief’ definition

- “Micro-credentials represent an alternative approach to career and professional development **whereby an individual’s skills, achievements, and accomplishments are recognised**. They offer the possibility to enhance skills, to manage career pathways as well as adding practicality in the academic content. Moreover, micro-credentials are cost-effective professional development strategies that significantly minimise employees training cost and time. **Also, micro-credentials in higher education institutions (HEIs) allows for the integration of digital badges within university curricular and community engagement activities to inspire connected and lifelong learning for the professional development of students, educators and communities in formal learning settings.** “
- Ghasia, M. et. Al (2019) IJEDICT, vol 15, 1 p.219



An example at SUNY

- A SUNY micro-credential is:
- Competency-based, reflecting skills and competencies mastered;
- Endorsed by the issuing institution as a whole;
- Developed through local faculty governance processes; and
- Meaningful and of high quality, with learning standards, assessments, and clear documentation of skills mastered that have meaning beyond one classroom, one program or the institution. Students can use a SUNY micro-credential to share their expertise to prospective employers, those hiring for internship opportunities, and to other academic institutions.
- SUNY micro-credentials can take the form of a digital badge, MOOC, or micro-award. SUNY is committed to ensuring that each micro-credential is represented clearly and accurately to students, addressing all associated costs, financial aid, transferability, and applicability (e.g., stack-ability) toward a formal award(s) (i.e., registered degree, certificate).



Guiding Principles of SUNY's Micro-Credential Policy

- ✓ Academic quality is paramount for micro-credentials, and faculty governance participation is required.
- ✓ Micro-credentials are initiated locally, developed, and approved according to local campus policies and procedures, consistent with campus mission and strategic goals.
- ✓ Micro-credentials designed to meet market needs should be informed by current data from appropriate markets and align with relevant industry/sector standards.
- ✓ Micro-credentials can provide opportunities for industry/education connections and partnerships.
- ✓ Micro-credentials are inherently more flexible and innovative.
- ✓ Micro-credentials should be portable (have value beyond the institution).
- ✓ Micro-credentials should be stackable (multiple micro-credentials lead to credit bearing coursework, a more advanced badge or a registered certificate or degree).



A History of Competency Based Learning and Micro- Certification at The UWI

UWI EXTRA MURAL DEPARTMENT/SCHOOL OF CONTINUING STUDIES

Short
Programme
certification
leading to
matriculation

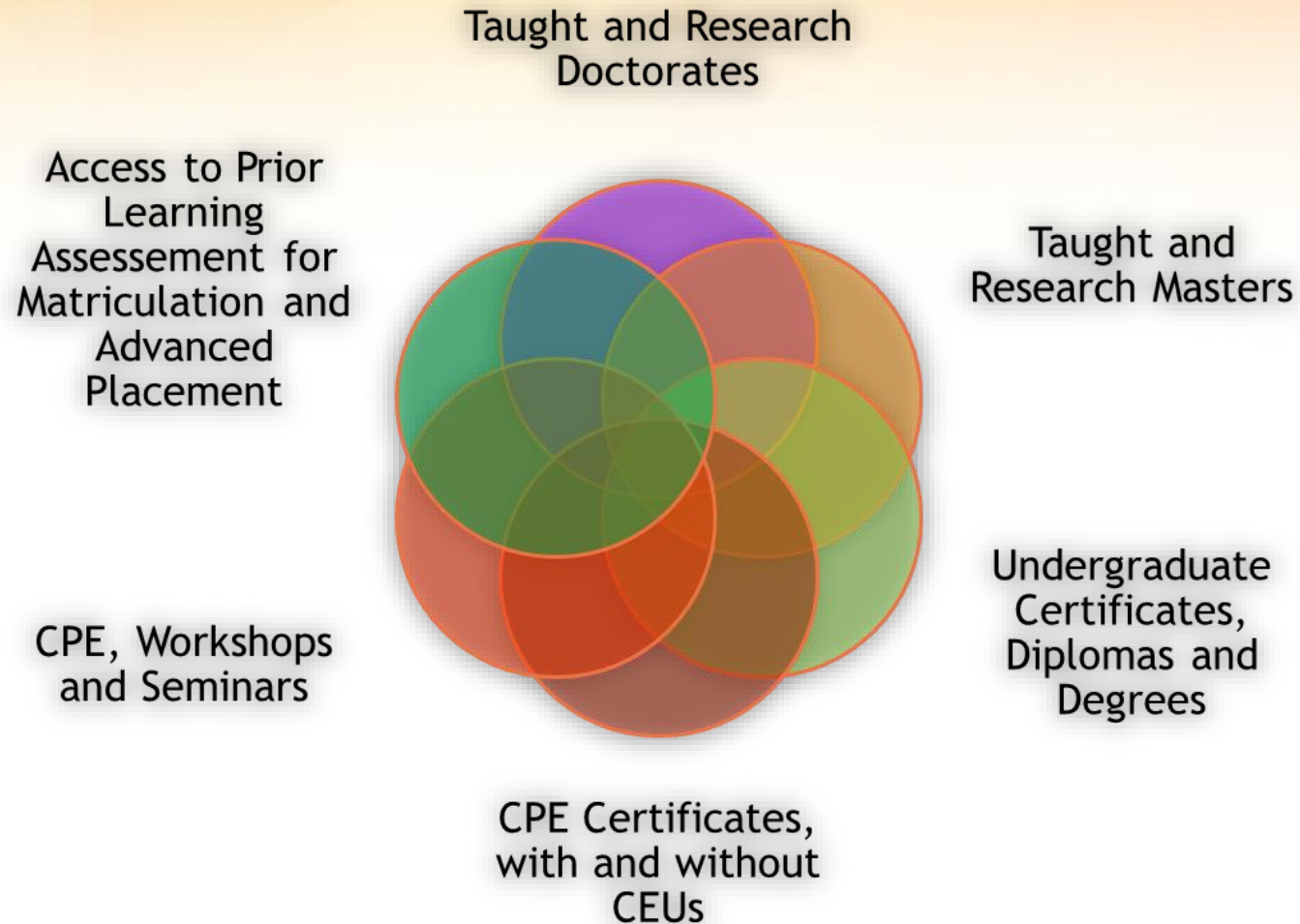
Challenge
Examinations

Experiential
Learning

For credit
courses



Expanded Learning Pathways at the Open Campus





UWI OPEN CAMPUS: FORGING THE PATHWAY TO QUALITY PROCESSES FOR MICRO CREDENTIALS

Review by BUS of Stackable/Micro-Credentials and integration into credit system

Piloting of digital Credentialing

Integration of all learners in the formal system

Introduction of CEU's

QA Policy framework in place



UWI
OPEN CAMPUS

Vertical



Horizontal

Early Childhood
Education Care and
Development CPE
Programme

First Aid Certification

Basic Accounting CPE
course

Managing Early
Childhood Centres CPE
programme



UWI
OPEN CAMPUS

Diagonal

PMI
Certification



BSc
Management
Studies

MSc
Management
Studies - Project
Management
Special



Digital Badging and the Growth of Micro-learning in the Brave New World of HE

“Micro-credentials -- badges or certificates that one can achieve by completing a set of courses from companies like edX and Coursera -- have been gaining ground in recent years. Universities have typically partnered with the companies to build the certificates -- called MicroMasters at edX and Specializations at Coursera -- and will sometimes accept them in place of an admissions requirement like the GRE or as partial credit toward a master’s degree at the institution.”

Inside Higher Education November 20, 2019

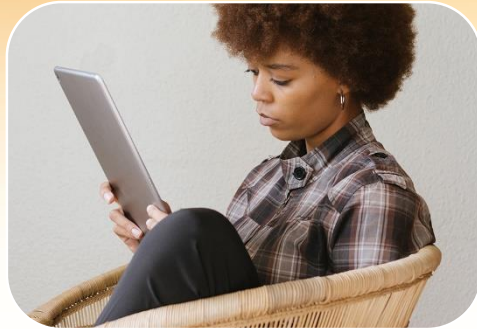
Advantages of Micro-credentialing/Digital Badging



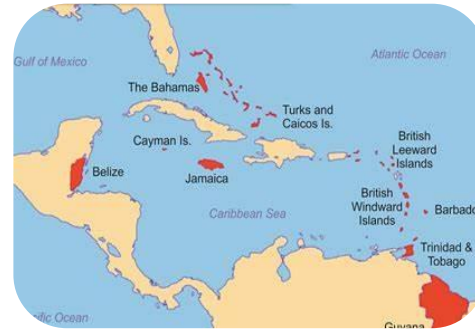


UWI
OPEN CAMPUS

Digital Badging at Open Campus APAD Facilitators and Course Coordinators



Innovative approaches
to examinations



THE STRATEGIC IMPORTANCE OF MICRO-CREDENTIALING

Triple A Vision 2017-2022

- ✓ Access
- ✓ Alignment
- ✓ Agility



Triple A Strategy
2017-2022



UWI
OPEN CAMPUS



SELECT A CAMPUS MyOC Vacancies Contacts Directory Webmail Search QUICK LINKS

THE UNIVERSITY OF THE WEST INDIES
OPEN CAMPUS

About UWI Admissions Academics

CPEC CONTINUING & PROFESSIONAL EDUCATION CENTRE

OCLIS Libraries Services Reference & Research Collections Sign in My Library Account

**OPENING DOORS TO
LIFE CHANGING
LEARNING**

FACE-TO-FACE COURSES ONLINE COURSES CPEC BLOG

COURSE SEARCH WORKSHOPS WEBINARS/SEMINARS

About the Continuing & Professional Education Centre:

CPE is located within a lifelong learning and workforce development framework and consists of a range of credit and non-credit programmes. Included among the non-credit programmes are professional development programmes, personal enrichment programmes, and customized workforce solutions. CPE has two distinct although in some regards overlapping areas of focus: continuing education and continuing professional education. Continuing Education (CE) has been the primary area of focus of the previous School of Continuing Studies and now the Open Campus Country Sites (OCCS). It focuses on pre-university basic and vocational education, is designed for adults with no higher education qualifications, caters for university certified individuals who are seeking to enhance their knowledge in a particular area, and fulfils workforce development needs. Continuing Professional Education is the second strand in the continuing education paradigm. It constitutes a systematized and codified set of activities that are directly related to the continuing professional development of members of a professional practice. It is an area of education that has grown in recent times in response to the needs of individuals to keep abreast of rapid changes occurring in the professional environment. Whether you have studied in the UWI before, or whether you are joining the institution for the first time, welcome to your gateway to continuing and professional education at the UWI Open Campus.

Contact Us:
cpe@open.uwi.edu

SHARE:

Emergency Contacts Directory Campus Contacts Helpdesk Email Webmaster Sitemap

Copyright 2004-19
The University of the West Indies
Open Campus
Contact Our Offices

Future Students
Current Students
Admissions
Administration
Alumni & Friends
Donors & Partners


About the Open Campus
Apply to UWI
Programmes
Open Life
Social Development & Research
Investing in Excellence
News
Events

With nearly 50 locations across the Caribbean, the UWI Open Campus, assists the University with providing virtual and physical access to accredited programmes, courses and other support services to students wherever they are.

Quality and Accreditation


A Growing Regional Market

Academic Year	CPE Programmes (Non-Senate Approved)
2017/2018	11,179
2018/2019	14,029



THE UNIVERSITY
OF THE
WEST INDIES
OPEN CAMPUS

Helping You To *Achieve...*



Apply Now
for our Industry Relevant
Continuing and Professional Education (CPE) Courses

New CPE Courses/Programmes



- **Business Administration**
- Introduction to **Digital Marketing**
- Advanced **Digital Marketing**
- Fundamentals of **Conversational Kwéyòl**
- Navigating the **Knowledge Economy**
- Property and **Real Estate Management**
- A Step-by-Step Guide to **Exporting**
- Culture of **Rastafari** (*existing Mona course - new to the OC*)
- **Transformational Leadership** to Achieve the SDGs in Developing States

New CPE Courses/Programmes



- Fundamentals of **Statistical Analysis** Techniques
- Foundations of **Data Management & Analysis**
- **E-Commerce** in Modern Business
- **Finance** for Decision-Makers
- Key Concepts in **Financial Institutions Management**
- Fundamentals of **Records Management**
- **Grant Proposal** Writing
- **Office Administration**
- Protocol and Soft **Diplomacy Skills**

Recommendations for Institutions

**Institutionalize
QA Policy**

**Prioritize
Agility**

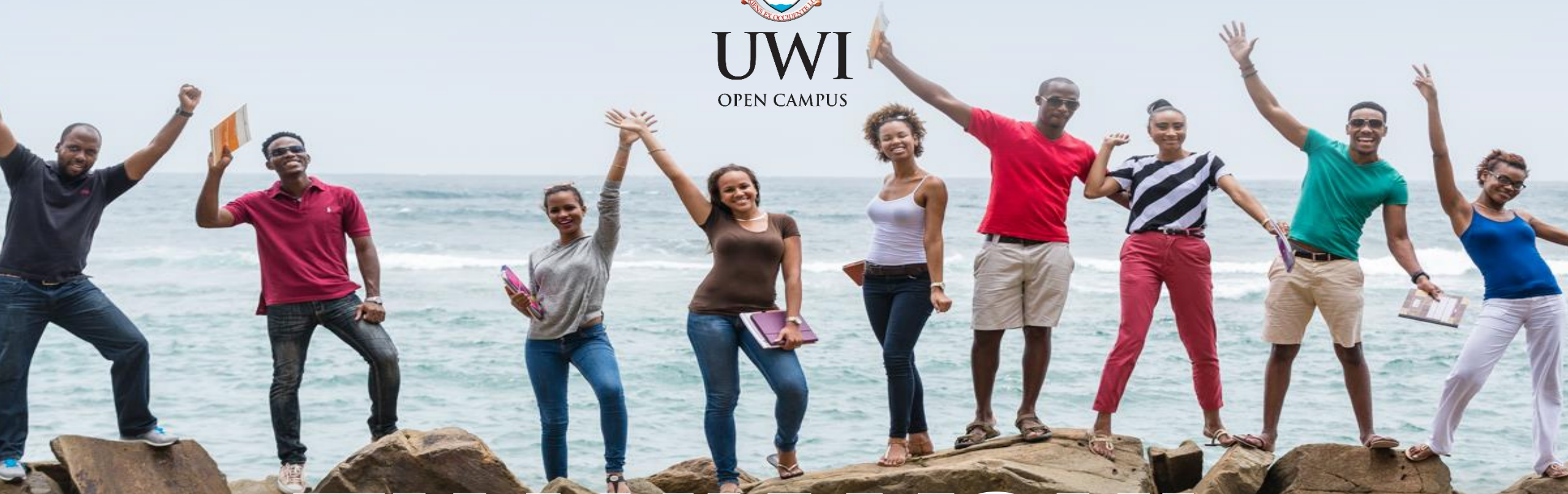
**Public
Education**

**Involve Faculty
in Building
“Stacks”**

**REGIONAL
INTEGRATION**



UWI
OPEN CAMPUS



THANK YOU!